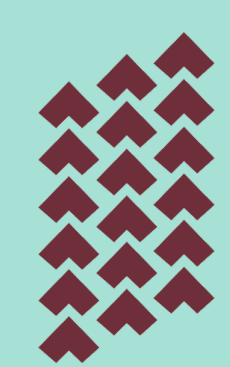


Where are you from?

Ma hea 'oe?







# Huliauapa'a

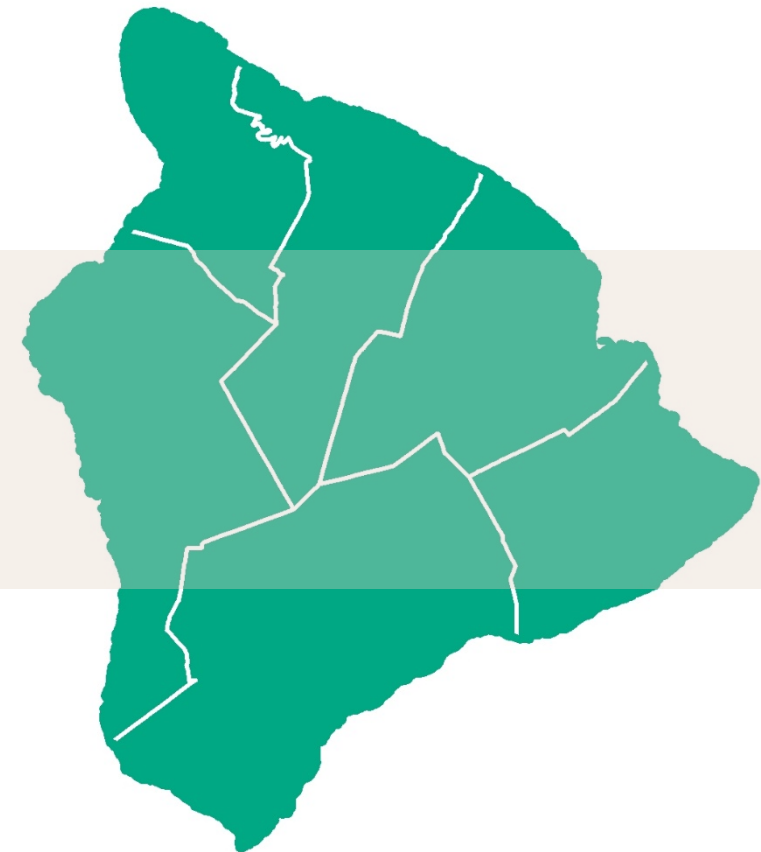
Growing Hawaii's communities through culturally based dimensions of innovative learning, leadership development, and collaborative networking in wahi kupuna stewardship



## KALI'UOKAPA'AKAI COLLECTIVE

Created from the need to organize our ideas, resources, and strategies to build capacity and take collective action in safeguarding our 'ike kūpuna, iwi kūpuna, and wahi kūpuna.



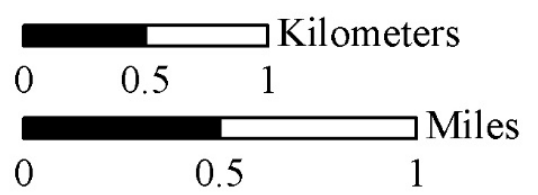


Can you always Hire within the Community?

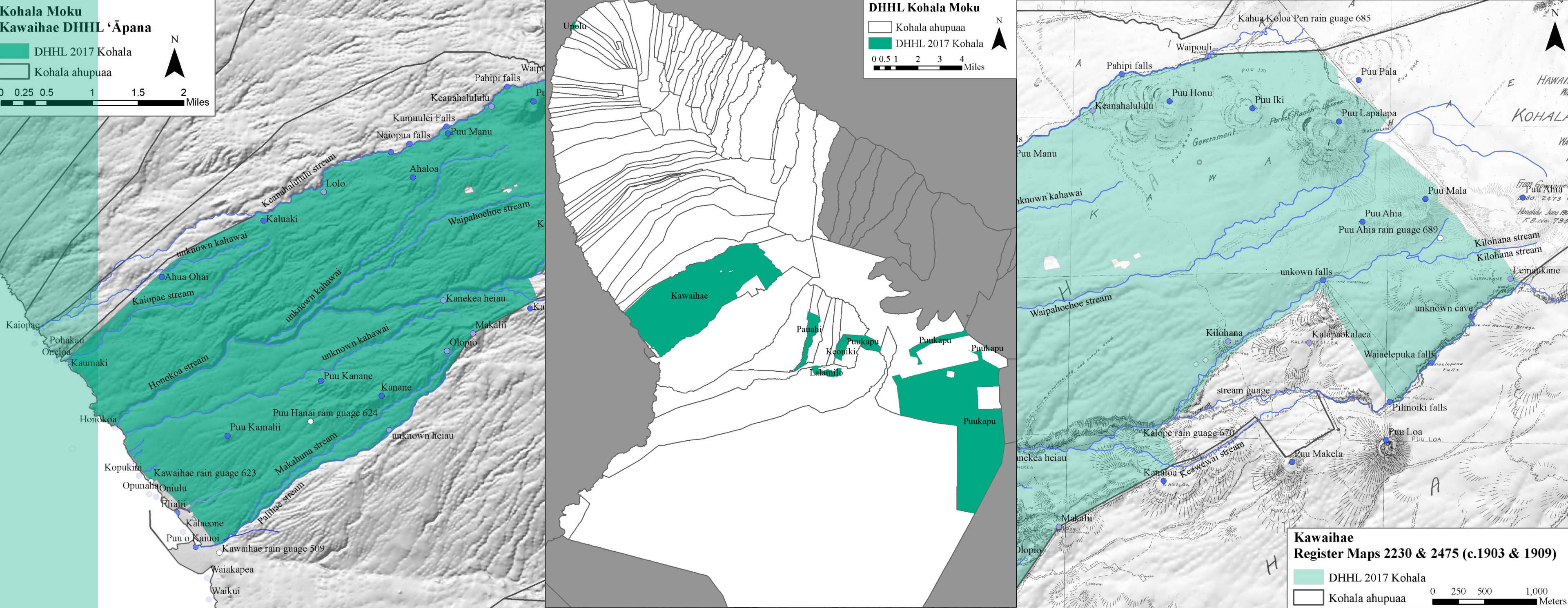


**Hanapēpē Place Names**

- DHHL 2017 Census
- lo'i pa'akai (salt beds)
- loko (pond)
- wahi pana (storied place)
- kuono (bay)
- lae (point)
- leina
- lua pele (crater)
- paena (landing)
- pali
- punawai (spring)
- puu (hill)
- ahupua'a boundary
- awa
- ditch
- kaha (beach)
- kahawai (stream)
- kualapa (ridge)
- railroad
- plantation waste ditch



The tools a planner / decision maker uses are powerful

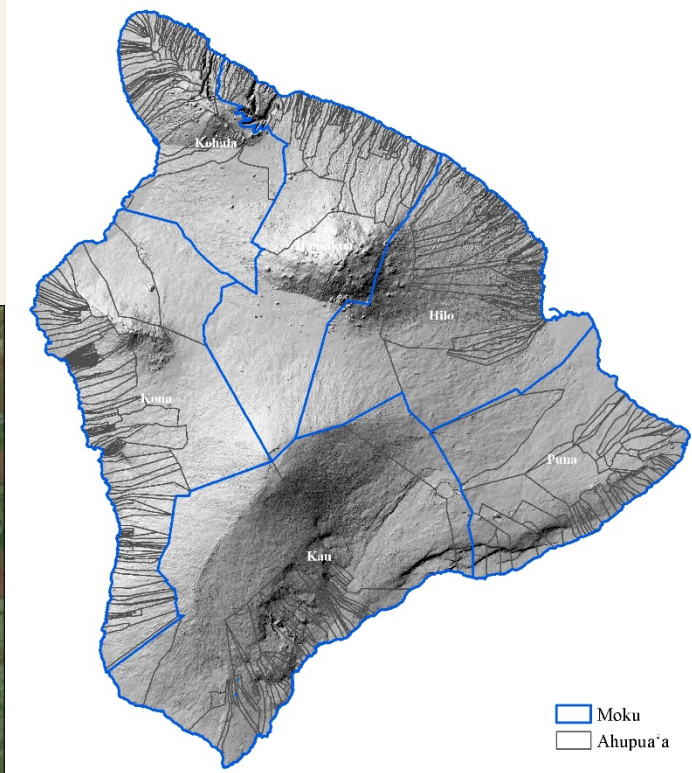
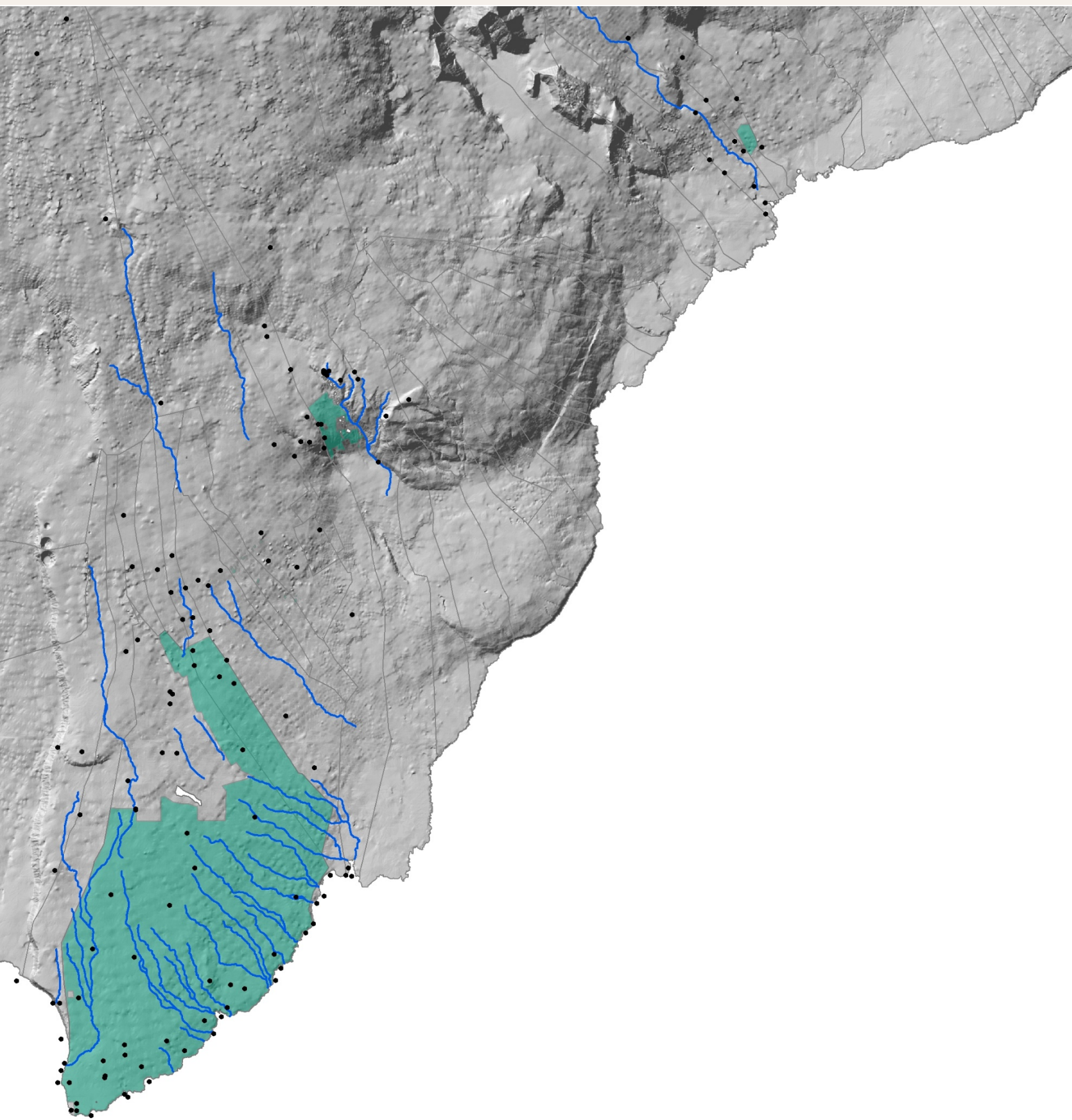


Understanding of and ability to locate existing and historic wai resources will lead to more informed decision making.

waiWAI offers DHHL a more comprehensive tool kit when weighing in on compliance consultation requests.

The waiWAI is an amazing resource for historic wahi inoa. It can be a tool for learning or a guide for restoration.

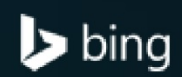
# Ka'ū



# Waikīkī



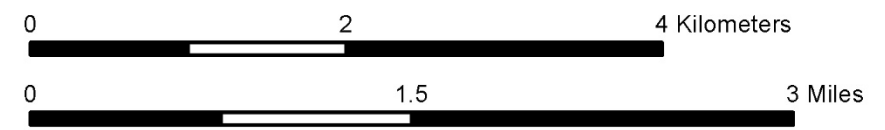
**Nā Pōhaku Ola Kapaemāhū A Kapuni**



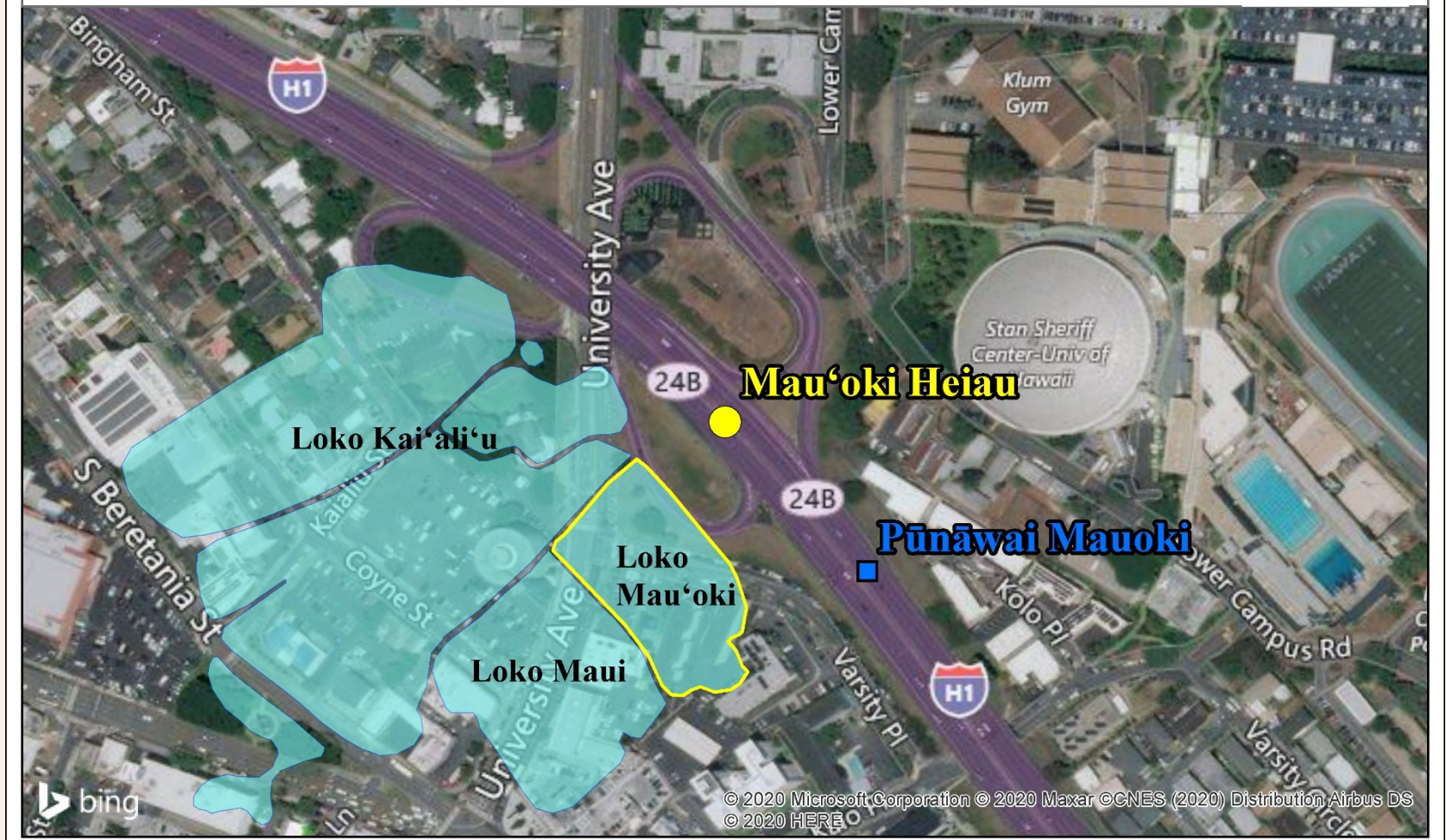
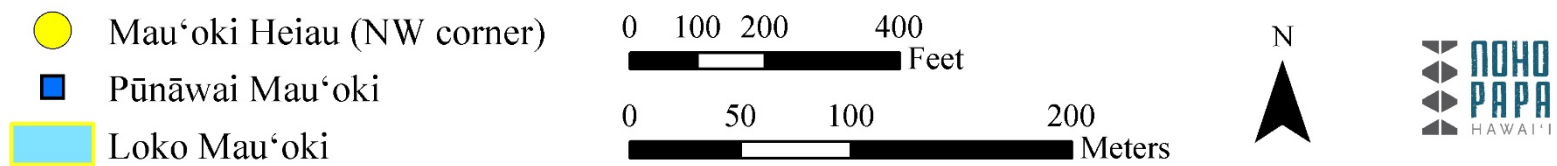
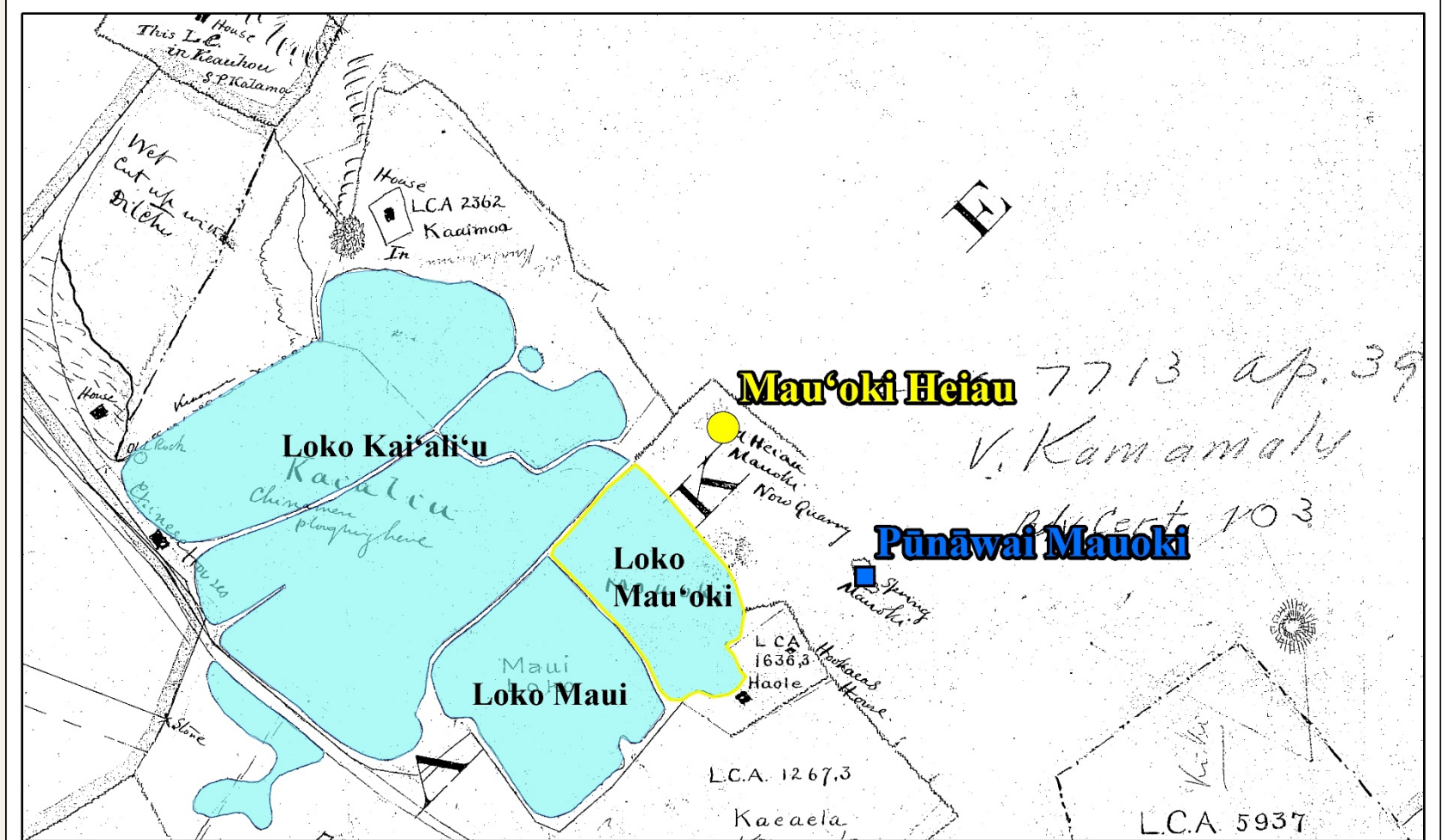
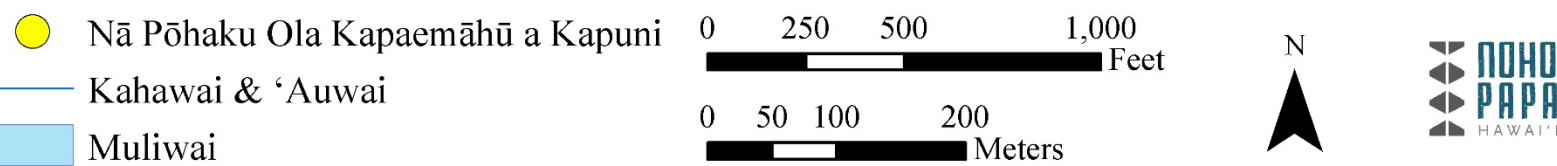
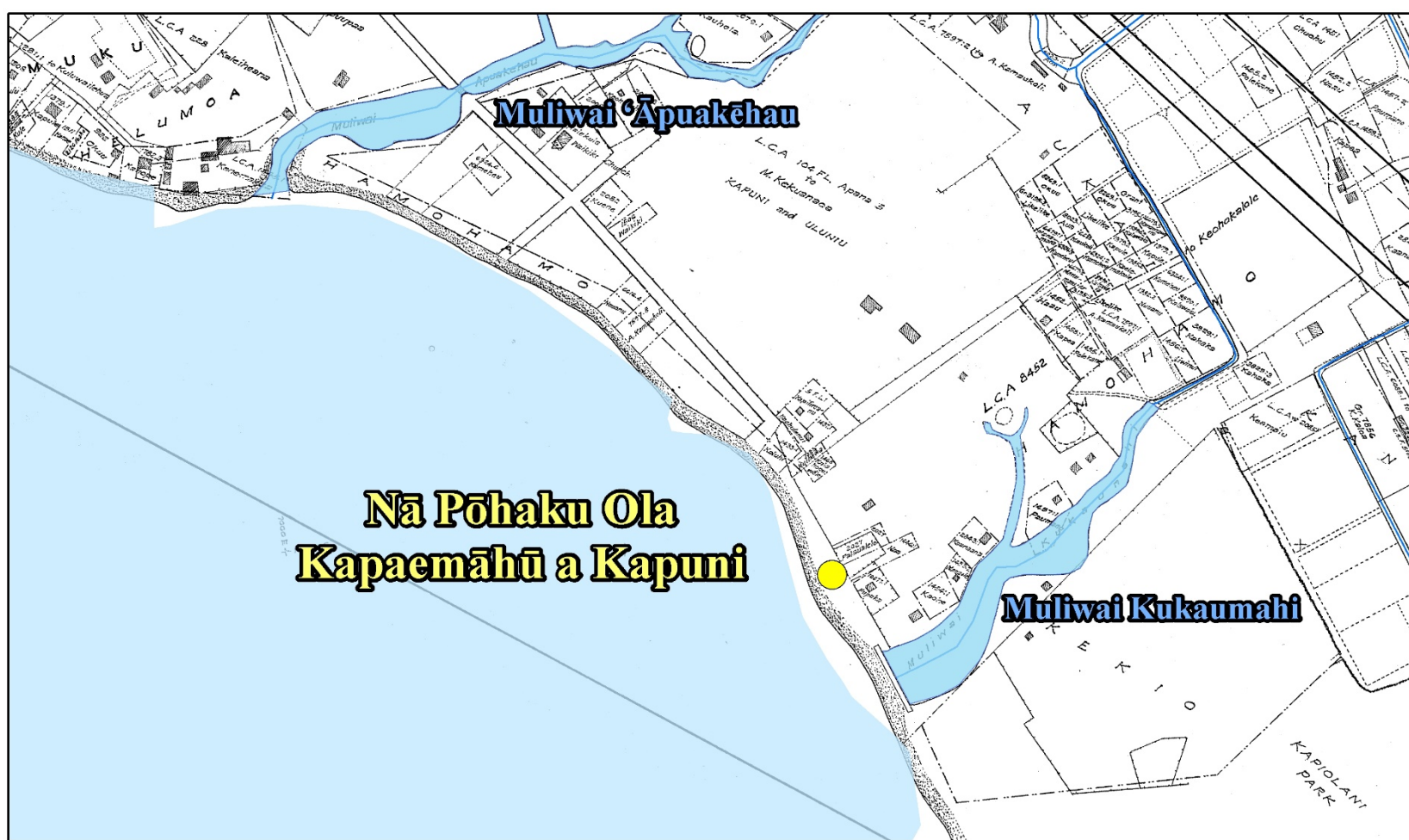
© 2020 Microsoft Corporation © 2020 Maxar ©CNES (2020) Distribution Airbus DS

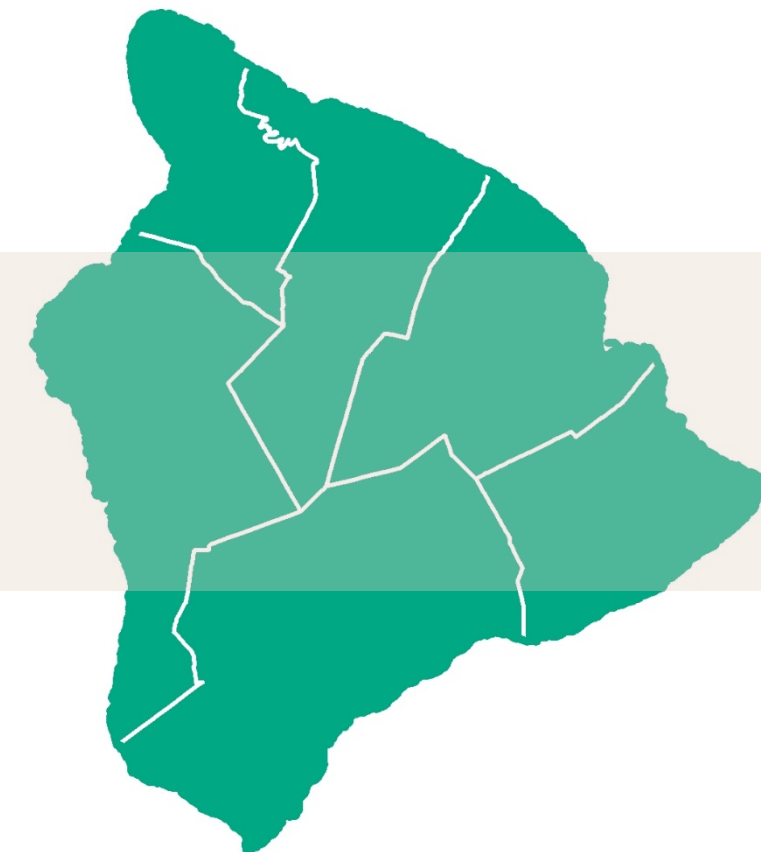
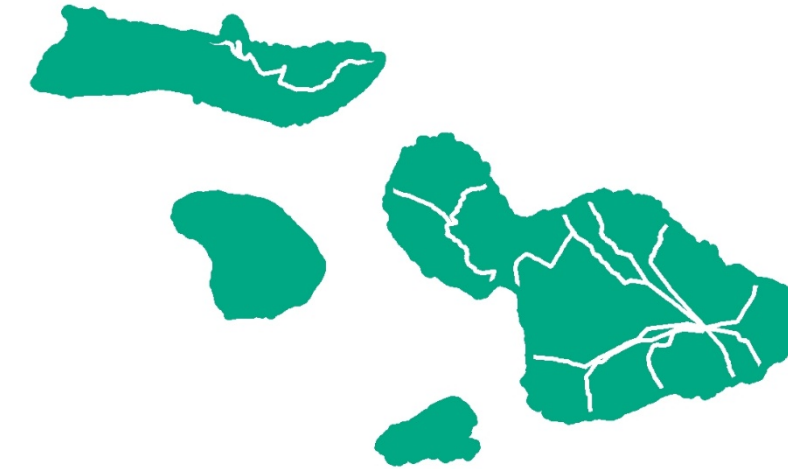
### Legend

- Ahupua'a Bdry.
- Palena Bdry.
- Kahawai
- Wahi Ho'ōla







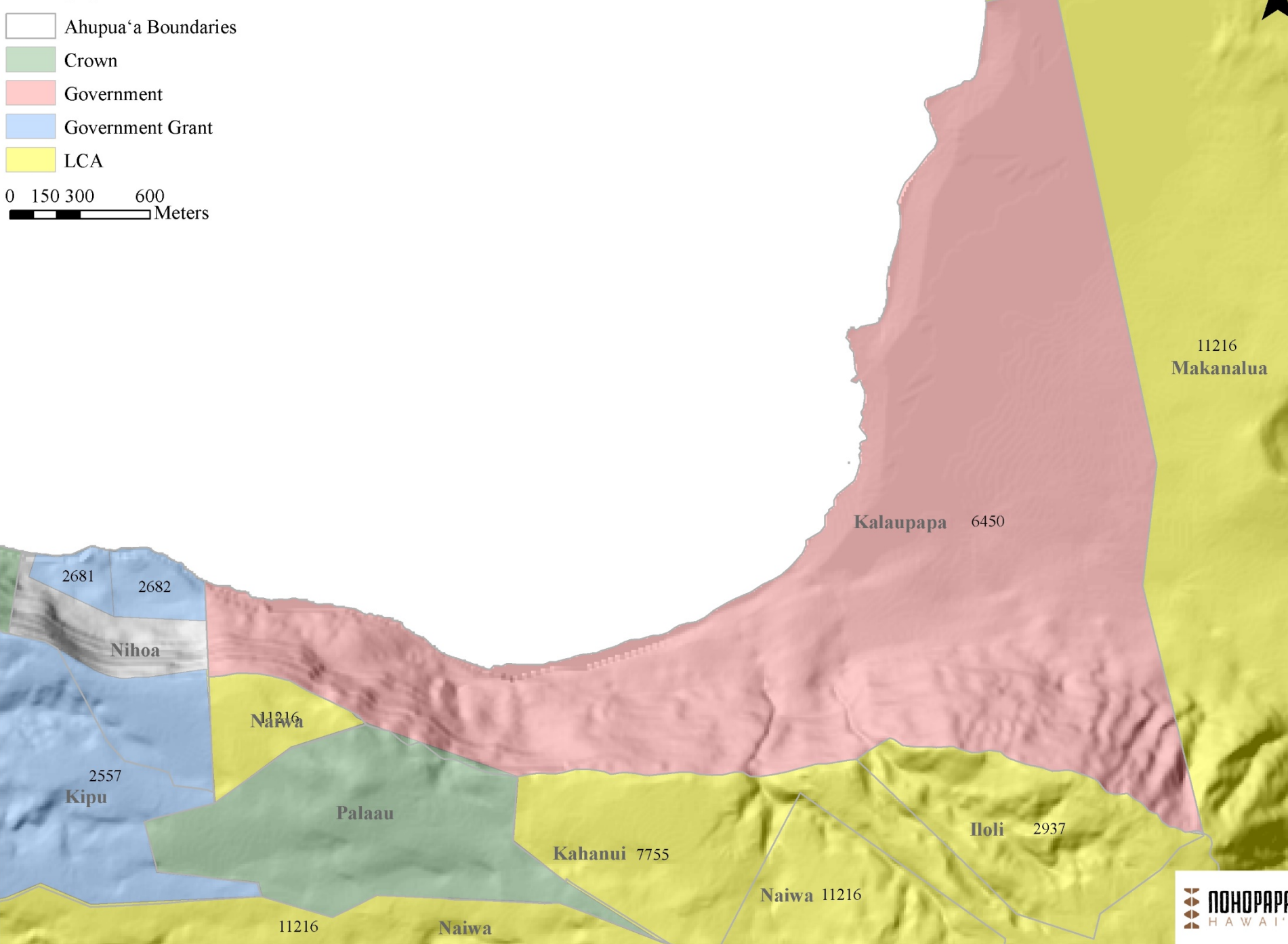


Top down and step up

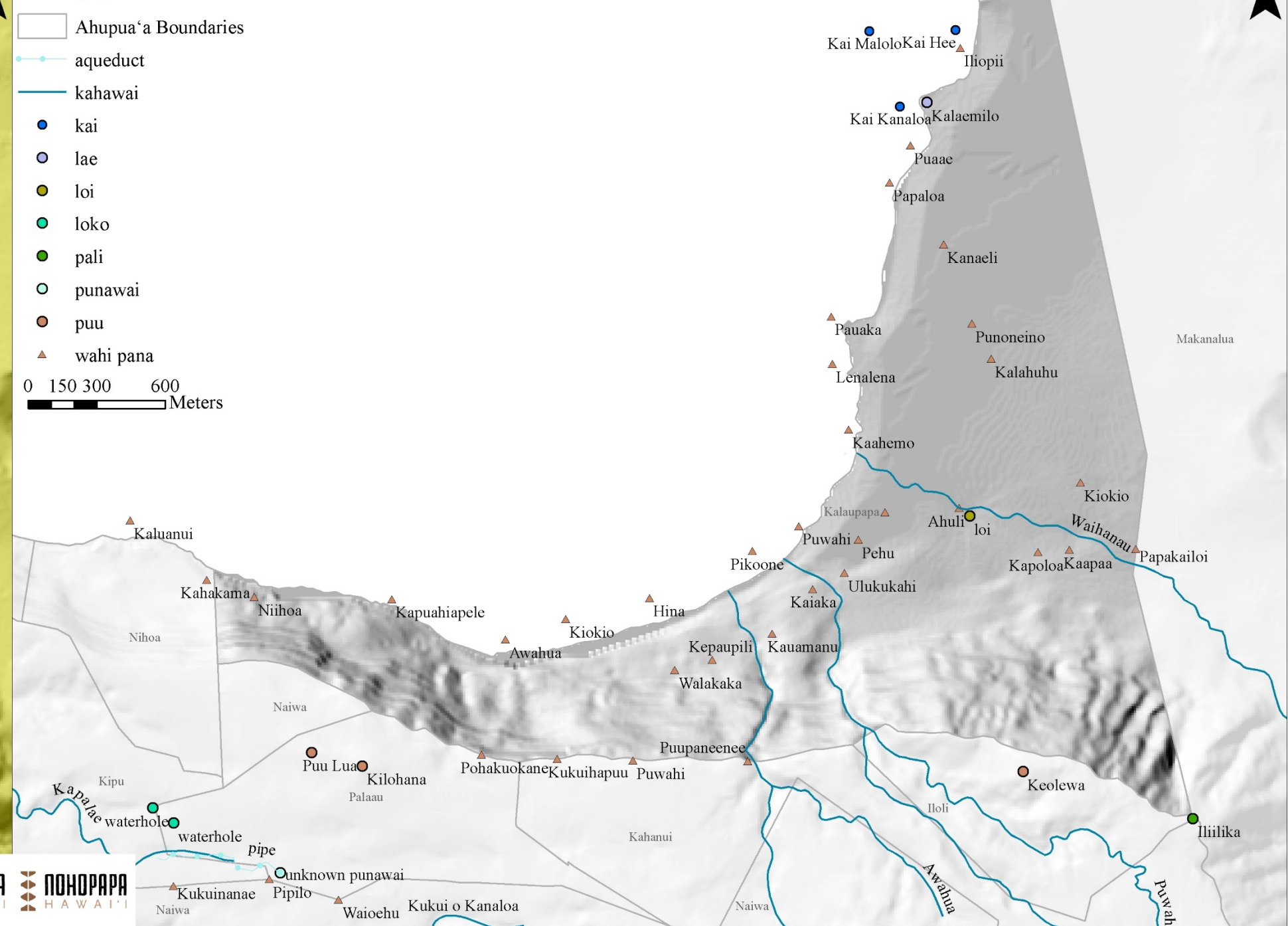
vs

Bottom up and step down

**Moloka'i Island, Ko'olau Moku  
Kalaupapa Hawaiian Homelands**



**Moloka'i Island, Ko'olau Moku  
Kalaupapa Hawaiian Homelands**



# Limitations

# Cultural Process

# All Pau

